

Four sizes that can be chosen
according to products

Seal Peel Melting Tank

Seal Peel Melting Tank



Storage and Packaging of Metal Products

SEAL PEEL MELTING TANK
for storage and packaging of metal products



HATA ELECTRIC MFG. CO., LTD.

YOKOHAMA

Excessive temperature
rise preventing
function provided

Protects

Important Metal Products

from **Rust** or **Damage!**



What is seal peel?

The seal peel is plastic in which oils and fats were mixed. The seal peel is solid at normal temperature, but it is melted when heated. It returns to a solid body when normal temperature is reached. Using this property, the seal peel wraps whole the products and protects them from rust or damage. (It can also partially protect products.)



Prevention from rust

Prevents the parts of an automobile and flying machine or the general parts of a tool and jig from rust.
(Gear, cutter, nozzle, drill, measuring equipment, gauge, calipers, etc.)

Storage of parts

Stores the parts described on the left or other parts for a long term or tightly seals parts and stores them so that they are not exposed to outside air.

Protection from damage or shock

Protects the polished metal surface or plated surface or prevents damage from occurrence during transportation.

Intended use

Insulation

Insulates and protects parts related to heavy and weak currents.

Moisture prevention

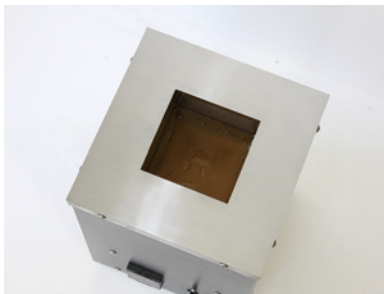
Protects each equipment that may be damaged by sea water and a sea breeze.

Packing during shipping

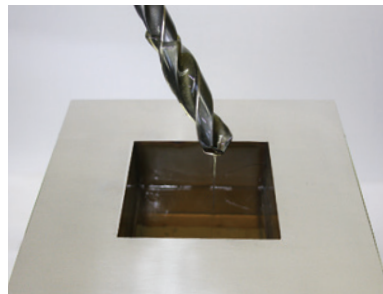
Prevents rust or damage from occurrence by coating during shipping.

Seal Peel Melting Tank

Melt seal peel and only put products quickly in the seal peel!



Melting



Putting

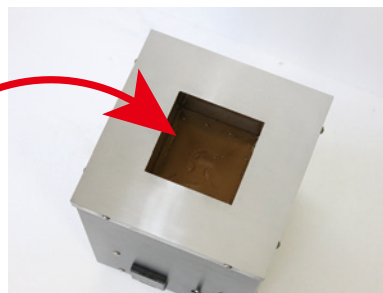


Solidified immediately

Such simple operation simultaneously enables storage and packing!

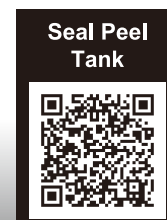
Can be easily peeled for reuse!

* Make a cut using a cutter to peel it easily when it is difficult to peel seal peel.



The used seal peel can be repeatedly reused by melting.

★ We also sell the seal peel that is put in a melting tank.



Seal Peel Melting Tank

Type	Outside dimensions	Power/electric power	Body weight	Remarks
	Inside dimensions			
Ultra-small size (SS)	250 (W) × 250 (L) × 310 (H)	100 V 0.8 KW	10 kg	Rubber foot and plug
	100 (w) × 100 (ℓ) × 100 (h)			
Small size (S-10)	350 (W) × 350 (L) × 485 (H)	100 V 1.2 KW	25 kg	Rubber foot and plug
	150 (w) × 150 (ℓ) × 250 (h)			
Medium size (M-20)	400 (W) × 450 (L) × 485 (H)	Single-phase 200 V 2.6 KW	34 kg	Caster not include plug
	200 (w) × 250 (ℓ) × 250 (h)			
Large size (L-30)	400 (W) × 600 (L) × 585 (H)	Three-phase 200 V 4 KW	50 kg	Caster not include plug
	200 (w) × 400 (ℓ) × 350 (h)			

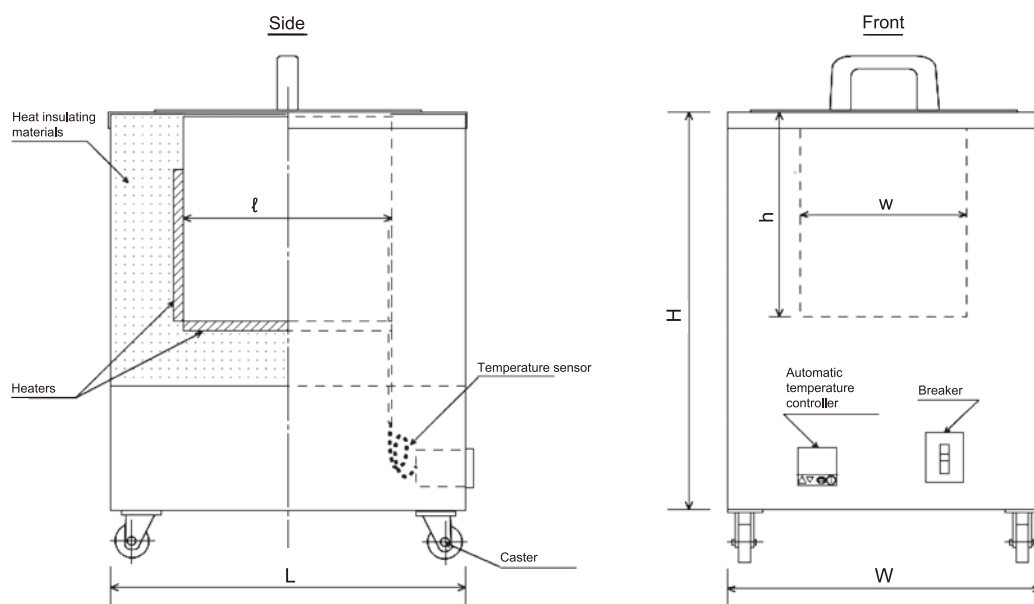
* An excessive temperature rise preventing function is provided as a standard feature.

* **Sizes and voltage changes** other than those listed above are also available.

Option

■ Calendar timer

Start and stop times can be set for each day of the week. (Excluding SS Size)



Manufactured items

ELEPOT Electric Furnace / Heat Processing Furnaces / Seal Peel Melting Tank / ELEPAK



HATA ELECTRIC MFG. CO., LTD.

8-37-37 Shinyoshidahigashi Kohoku-ku Yokohama-shi, Kanagawa 223-0058, Japan

TEL: +81-45-545-1410 / FAX: +81-45-545-1402

E-mail: info@hatadenki.co.jp

URL: <https://www.hatadenki.co.jp>